



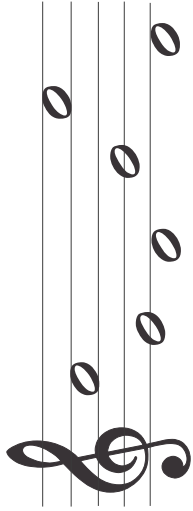
Note Names

Worksheet 5

Name

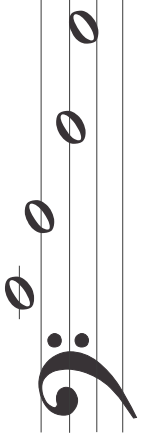
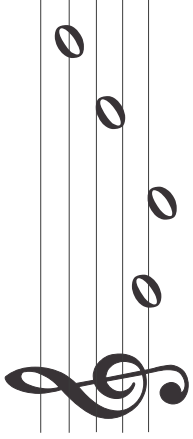
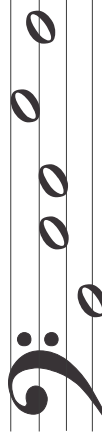
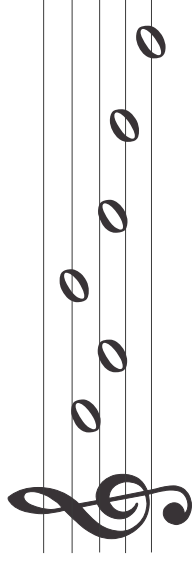
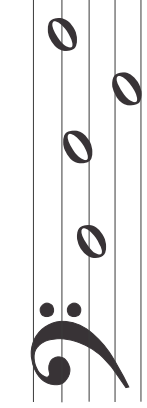
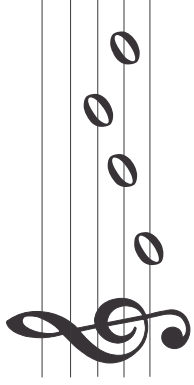
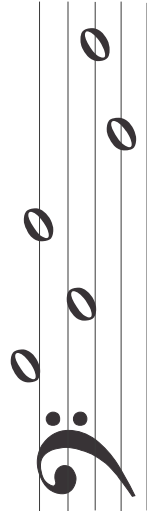
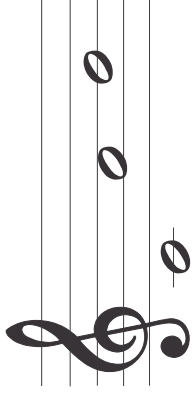
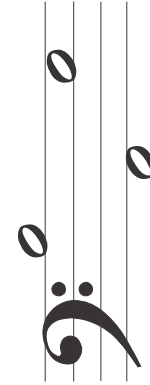
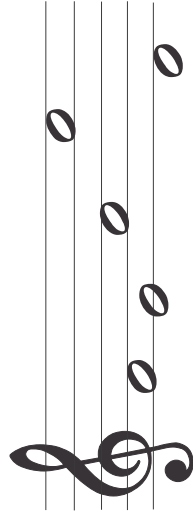
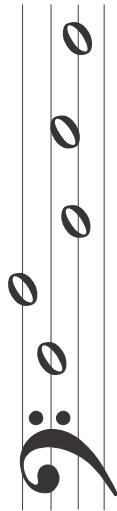
Mystery Word

All the words used are in the middle of this page, but there are some hidden extra letters in these words. Write the correct words under the notes. Then write all the extra letters in the middle. They spell the mystery word.



egg
bag
cadge
faded
edged
bead

feed
deaf
cab
beef
dad
cafe





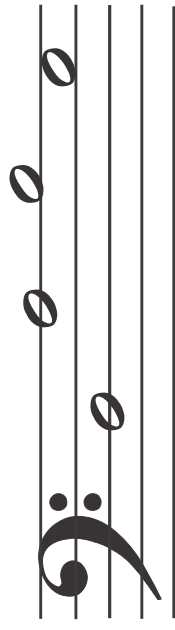
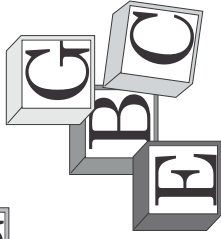
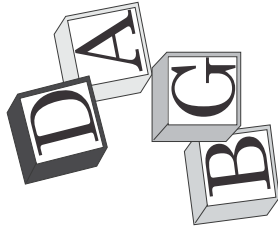
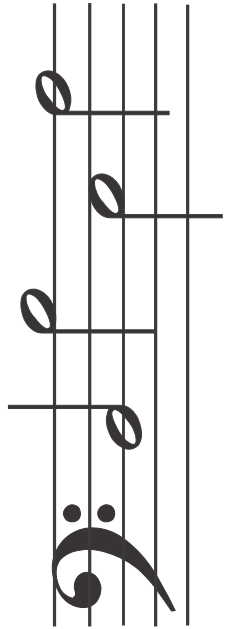
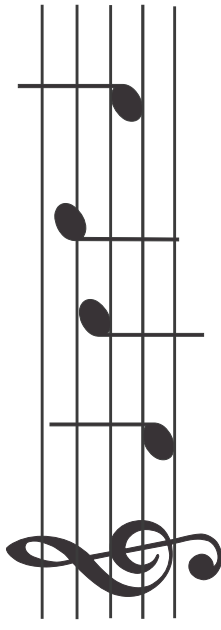
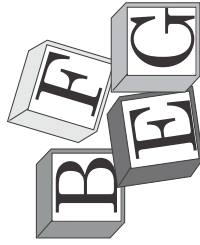
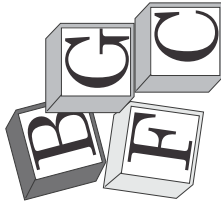
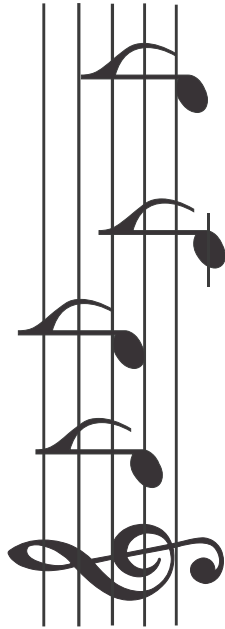
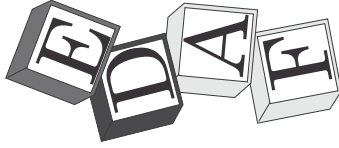
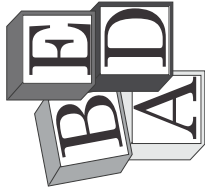
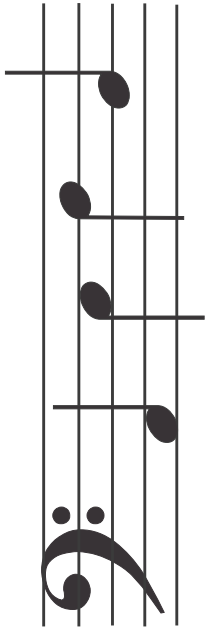
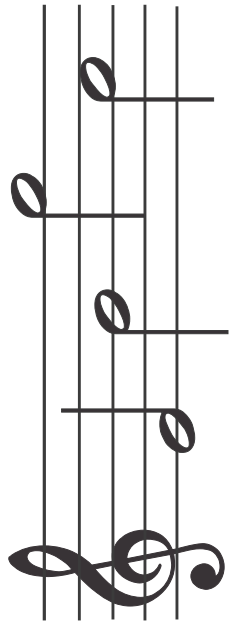
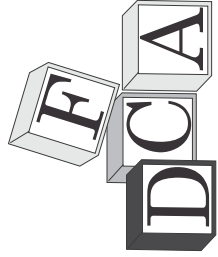
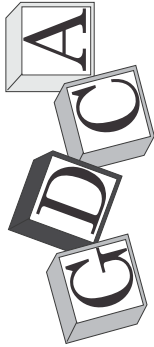
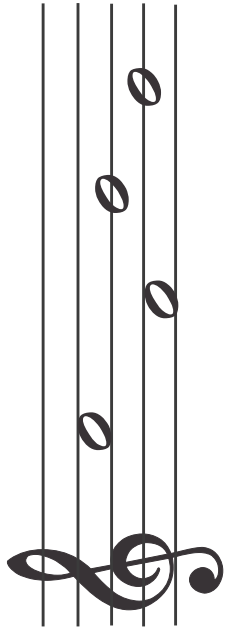
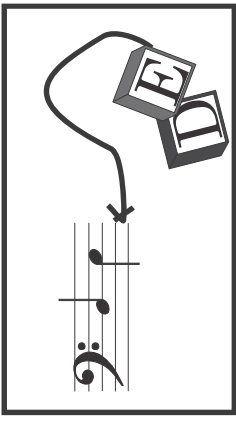
Note Names

Worksheet 6

Match Them Up

Use lines to join each group of blocks with a matching group of notes.

Name





Name

Music Cross Word

Across

1.

5.

6.

8.

9.

| | | | | | | | | | | |
|---|---|---|--|---|---|--|---|---|---|--|
| 1 | 2 | 3 | | 4 | 5 | | 6 | 7 | 8 | |
| | | | | | | | | | | |
| | | | | | | | | | | |
| | | | | | | | | | | |
| | | | | | | | | | | |
| | | | | | | | | | | |
| | | | | | | | | | | |
| | | | | | | | | | | |
| | | | | | | | | | | |
| | | | | | | | | | | |
| | | | | | | | | | | |

3.

4.

6.

7.

Down

1.

2.



Note Names

Worksheet 8

Name

Hidden Story 1

Some of the letters A B C D E F and G have been left out of this story. You can find them in the proper order on the staves below. See if you can fill them in and complete the story. Use a very sharp pencil and write neatly.

A musical staff in treble clef with a key signature of one sharp (F#). The notes are: G4 (quarter), A4 (quarter), B4 (quarter), C5 (quarter), D5 (quarter), E5 (quarter), F5 (quarter), G5 (quarter).

Joh _ nn S _ _ sti _ n _ _ h w _ s _ r _ _ t _ _ r m _ n

A musical staff in treble clef with a key signature of one sharp (F#). The notes are: G4 (quarter), A4 (quarter), B4 (quarter), C5 (quarter), D5 (quarter), E5 (quarter), F5 (quarter), G5 (quarter).

_ ompos _ r. H_ w _ s _ orn in _ is _ n _ _ h _ n _ h _ _ a l _ r _ _

A musical staff in treble clef with a key signature of one sharp (F#). The notes are: G4 (quarter), A4 (quarter), B4 (quarter), C5 (quarter), D5 (quarter), E5 (quarter), F5 (quarter), G5 (quarter).

_ _ mily _ n _ m _ ny _ hil _ r _ n. H _ w _ nt _ lin _ _ _ or _ he _ ie _.



Note Names

Worksheet 9

Name

Hidden Story 2

Some of the letters A B C D E F and G have been left out of this story. You can find them in the proper order on the staves below. See if you can fill them in and complete the story. Use a very sharp pencil and write neatly.

_____ or _____ ri _____ n _____ h _____ n _____ l _____ w _____ s _____ or _____ n _____ in _____ rm _____ ny.

H _____ liv _____ in _____ n _____ l _____ n _____ or most o _____ his li _____ n _____ wrot _____

th _____ Musi _____ or th _____ Roy _____ l _____ ir _____ works _____ nd _____ v _____ ry _____ mu _____ h _____ mor _____.